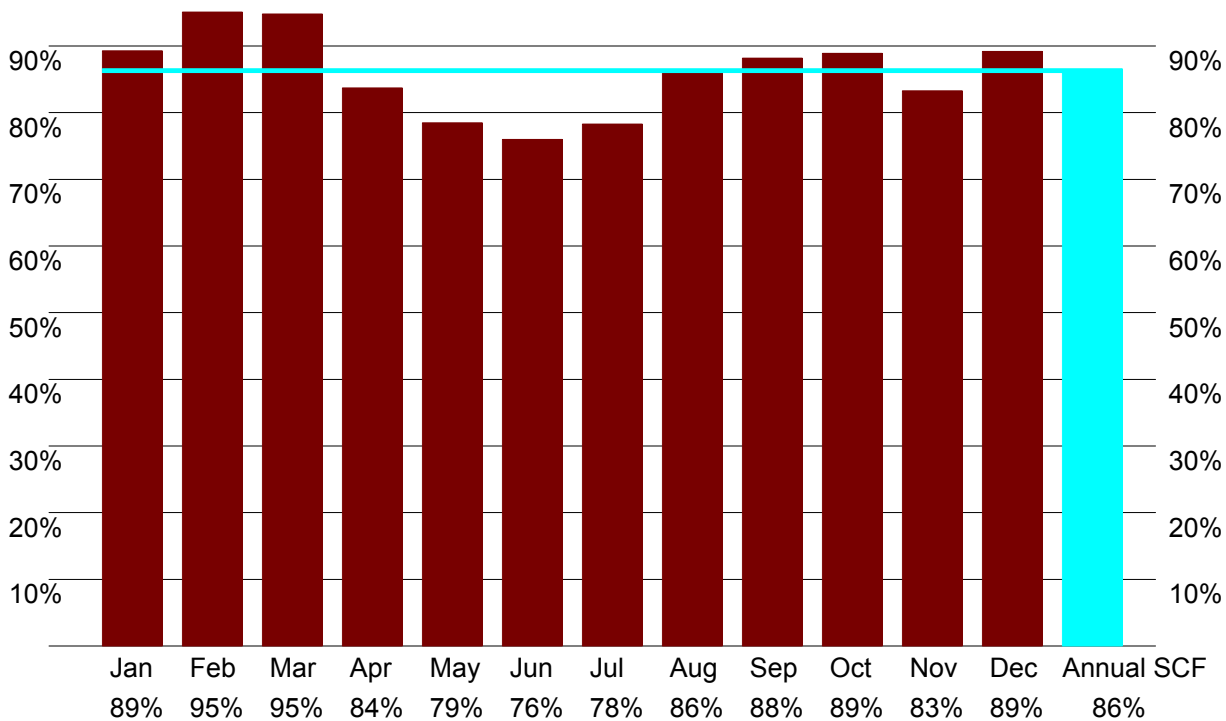


....., Solahart Technical Services, South Africa  
**Energy Savings with Solahart 302KF**

Location.. Nelspruit Latitude.. 26° S Inclination.. 20° Orientation .. North



**Total energy from the sun.....4609 kWh/year under average conditions.\*\*\***

**Savings relative to a 150 litre electric water heater.\*\***

**Average use 288 Litres/day at 60°C ( 44 MJ/day)**

	Jan	Feb	Mar	Apr	May	Jun	Jul	Aug	Sep	Oct	Nov	Dec	
Radiation	20.23	21.02	19.73	16.56	14.83	14.04	14.72	16.81	18.18	19.12	18.97	20.38	MJ/m <sup>2</sup> .day
Ambient	25.2	25.0	24.6	23.6	21.2	18.7	18.3	20.7	22.5	23.5	23.5	25.0	°C
Cold Water	27.5	28.0	27.0	25.0	21.0	18.0	18.0	19.5	22.0	24.0	25.0	27.0	°C
Solar Input	12.95	13.79	13.84	12.22	11.62	11.4	11.75	12.77	12.97	12.98	12.16	12.93	kWh/day
Boost input	1.55	0.71	0.76	2.39	3.18	3.59	3.25	2.03	1.74	1.63	2.45	1.57	kWh/day
Electric HWS*	12.45	12.24	12.67	13.54	15.32	16.69	16.69	16.0	14.87	13.98	13.54	12.67	kWh/day
Energy saved	10.9	11.52	11.91	11.15	12.14	13.1	13.43	13.97	13.13	12.36	11.1	11.1	kWh/day
	338	323	369	335	376	393	416	433	394	383	333	344	kWh/month

Total Annual Savings on Energy Use vs. an Electric water heater. .. 15973 MJ/year = 4437 kWh/year  
**Reduction in Carbon Di-Oxide Emissions.5.81Tonnes / Year (From a Coal Fired Power station)**

\* 150 litre electric water heater container loss of 1.98 kWh/day.

\*\* Estimated savings are calculated with hot water use distributed throughout the day.

2008/07/01

**Selected Energy (Pty) Ltd**

Solahart Southern Africa

Corporate Headquarters: 112 Pilbara Street, Welshpool, Western Australia 6106. Postal Address: P.O. Box 95, Welshpool, Western Australia 6986.

Phone: Int. +61 8 9351 4600. Fax: Int. +61 8 9458 7640. Email: solahart@solahart.com.au. Internet: http://www.solahart.com.au.



ABN 45 064 945 848